



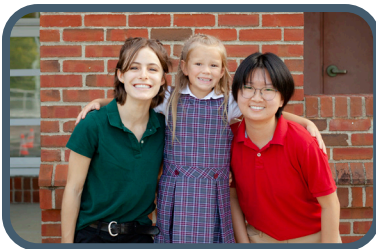
# Columbus Academy

Accredited by the Independent School Association of the Central States (ISACS),  
the Ohio Department of Education (ODE), and the National Association of Independent Schools (NAIS)

## 2022-23 School Profile

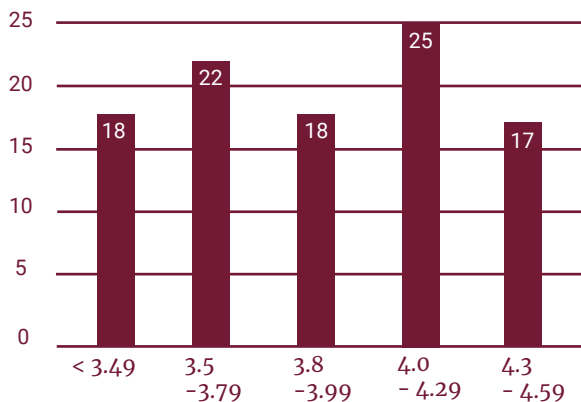
### About Columbus Academy

Founded in 1911, Columbus Academy is a coeducational school enrolling 1,170 students from our Explorers Program to Grade 12. Academy offers a challenging liberal arts, college preparatory program. Located on a 231-acre campus nine miles northeast of Columbus, the school draws a diverse student body of 420 students in grades 9 through 12, from a 30-mile radius in central Ohio. Approximately 25% of the upper school student body receives tuition assistance.



#### Class of 2023 GPA Distribution

100 of 101 students (1 new student)  
(as of September 1, 2022)



Students are graded on the following scale:

A+	97-100
A	93-96
A-	90-92
B+	87-89
B	83-86
B-	80-82
C+	77-79
C	73-76
C-	70-72
D+	67-69
D	63-66
D-	60-62
Below 60 is not a passing mark.	

Our traditional grading scale allows for a 10-point differential within each letter grade.

#### Columbus Academy does not rank its students.

GPA's are calculated using all graded courses earned at Academy.

- No additional weight added for standard college-preparatory courses
- 10% additional weight added for "Advanced" courses
- 15% additional weight added for "Honors" courses

*Prerequisite criteria must be met for entry to Advanced and Honors courses.*

- **Advanced** courses typically are accelerated versions of the college-preparatory courses.
- **Honors** courses are those in which the syllabus is designed predominantly to prepare students for a college-level, external examination.

Weighted grade-point averages (WGPA) are reported on transcripts and documents sent to colleges and scholarship agencies.

Columbus Academy • 4300 Cherry Bottom Road • Gahanna, OH 43230 | More information at: [columbusacademy.org](http://columbusacademy.org)

Melissa Soderberg  
Head of School

[soderbergm@columbusacademy.org](mailto:soderbergm@columbusacademy.org)

Darnell Heywood  
Director of College Counseling  
[heywoodd@columbusacademy.org](mailto:heywoodd@columbusacademy.org)

Karla Crucke  
Assistant Director of College Counseling  
[cruckek@columbusacademy.org](mailto:cruckek@columbusacademy.org)

Cory Izokaitis  
Head of Upper School  
[izokaitisc@columbusacademy.org](mailto:izokaitisc@columbusacademy.org)

Jen FitzPatrick  
Associate Director of College Counseling  
[fitzpatrickj@columbusacademy.org](mailto:fitzpatrickj@columbusacademy.org)

College Counseling Office  
[collegecounseling@columbusacademy.org](mailto:collegecounseling@columbusacademy.org)

Class of 2022 College Enrollments & Acceptances

Typically 100% of Columbus Academy graduates enroll at four-year colleges and universities. One or more members of the Class of 2022 will attend colleges and universities in *bold italics*.

- Alabama State University

Albany State University

Allen University

American University

Amherst College

Arizona State University

Ashland University

Babson College

Baldwin Wallace University

Bates College

Baylor University

Bellarmine University

Berklee College of Music

Bethune-Cookman University

Boston College

Boston University

Bowdoin College

Bowling Green State University

Brown University

Bryn Mawr College

Butler University

California Institute of Technology

Capital University

Carleton College

Carnegie Mellon University

Case Western Reserve University

Central State University

Centre College

Clemson University

Cleveland State University

Coastal Carolina University

College of Charleston

College of William and Mary

Colorado College

Columbia University

Columbus College of Art and Design

Connecticut College

Cornell University

Dartmouth College

Davidson College

Denison University

DePaul University

DePauw University

Dickinson College

Drake University

Drexel University

Duke University

Duquesne University

Eastern Michigan University

Eckerd College

Elon University

Emory University

Emory University, Oxford College

Endicott College

Flagler College-St. Augustine

Florida Institute of Technology

Fordham University

Fort Valley State University

Franklin and Marshall College

Furman University

George Washington University

Georgetown University

Georgia Institute of Technology

Hamilton College

Hampton University

Harvard University

High Point University

Hobart William Smith Colleges

Howard University

Illinois Institute of Technology

Indiana University-Bloomington

Jackson State University

James Madison University

John Carroll University

Johns Hopkins University

Johnson C Smith University

Kent State University

Kentucky State University

Kenyon College

Lake Erie College

Lawrence Technological University

Lewis & Clark College

Loyola University Chicago

Macalester College

Marist College

Marquette University

Mercyhurst University

Miami University-Oxford

Michigan State University

Mississippi State University

Mississippi Valley State University

Muskingum University

Nazareth College

New York University

Norfolk State University

North Carolina A & T State University

North Carolina State University

Northeastern University

Nova Southeastern University

Oberlin College

Ohio Northern University

Ohio State University
- Ohio State University, Newark

Ohio University

Ohio Wesleyan University

Otterbein University

Pennsylvania State University

Pomona College

Providence College

Purdue University

Quinnipiac University

Radford University

Reed College

Rensselaer Polytechnic Institute

Rhodes College

Rider University

Rochester Institute of Technology

Rollins College

Rose-Hulman Institute of Technology

Saint Louis University

Salve Regina University

Santa Clara University

Seton Hill University

Skidmore College

Southern Methodist University

Spelman College

St. Lawrence University

Stanford University

Suffolk University

Syracuse University

Tennessee State University

Texas Christian University

The College of Wooster

The University of Alabama

The University of Edinburgh

The University of Findlay

The University of Montana

The University of Tampa

The University of Tennessee

The University of Texas at Austin

The University of Texas at Dallas

The University of the South

Thomas More College

Trinity College

Tulane University

University of Akron

University of Arizona

University of California-Davis

University of California-Irvine

University of California-Los Angeles

University of California-San Diego

University of California-Santa Barbara

University of Chicago

University of Cincinnati

University of Colorado Boulder

University of Dayton

University of Delaware

University of Denver

University of Florida

University of Georgia

University of Indianapolis

University of Kentucky

University of Louisville

University of Manchester

University of Maryland

University of Massachusetts

University of Miami

University of Michigan

University of Minnesota

University of Missouri-Kansas City

University of Mount Union

University of North Carolina, Chapel Hill

University of Oregon

University of Pennsylvania

University of Pittsburgh

University of Puget Sound

University of Redlands

University of Richmond

University of Rochester

University of San Francisco

University of South Carolina

University of South Florida

University of Southern California

University of St. Andrews

University of Toledo

University of Utah

University of Vermont

University of Virginia

University of Washington

University of Wisconsin

Valparaiso University

Vanderbilt University

Villanova University

Virginia Polytechnic Institute

Wake Forest University

Washington & Jefferson College

Washington University in St. Louis

West Virginia State University

West Virginia University

Wheeling Jesuit University

Wittenberg University

Wofford College

Xavier University

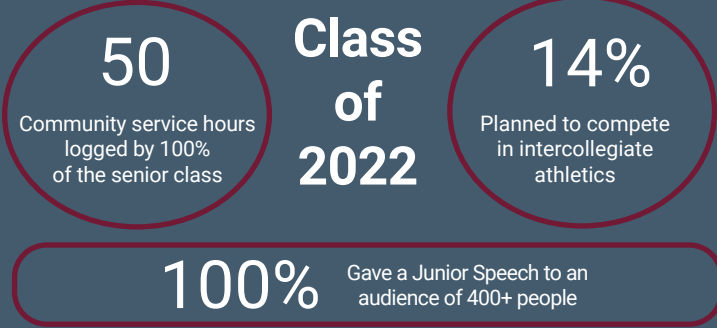
Yale University

Class of 2022 Standardized Test Scores

SAT® Reasoning	Mid 50%	Mean	ACT® Average	Mid 50%	Mean
EBRW	610-740	666	Composite	26-33	28
Mathematics	565-770	657			
SAT®	1180-1500	1323			

National Merit Scholarship Results

From our Class of 2022, 27 students (24%) were recognized by the National Merit Scholarship Corporation: Commended Students and Semifinalists, 19 of whom became Finalists.



HONORS COURSES/AP PREPARATION

Please note: Columbus Academy does not offer Advanced Placement (AP®) courses. However, AP® examination preparation is offered in all Honors and many Advanced courses. The designation “AP®” is not included on the transcript for those respective courses. See columbusacademy.org/courses for additional details.

2022 AP® Examination Results

Total Exams	542
Students taking exams	240
Students with scores of 3 or above	216
Number of AP® Scholars	119

Students typically take AP® exams in the following subject areas:

Biology	English Language & Comp	Physics 1
Calculus AB & BC	English Literature & Comp	Physics C: E&M and Mechanics
Chemistry	European History	Spanish Language & Culture
Chinese Language & Culture	Latin	Statistics
Comparative Gov & Politics	Macro & Micro Economics	U.S. Government
Computer Science	Music Theory	U.S. & World History

Graduation Requirements (Minimum Credits)

- English . . . . . 4 credits
- Mathematics . . . . . 3 credits (through Algebra 2)
- Science . . . . . 3 credits
- Fine Arts, Music, . . . . . 1 credit
- Performing Arts
- Language of 1 language . . . . 3 credits (OR 2 of 2 languages). . . . . (4 credits)
- History . . . . . 3 credits
- Physical Education . . . . . minimum of 1 season/semester per year for 3 years
- Health . . . . . 1 year
- Ethics & Character . . . . . 1 year

Additional Requirements

- Public Speaking . . . . . 0.25 credits (Junior Speech)
- Community Service. . . . . 50 hours
- Senior Project. . . . . 75 hours (completed May of Grade 12)



Website: columbusacademy.org • Phone: 614.509.2311  
CEEb/ACT Code: 361525